

SEFE Partnership

Furthering Skills & The Economy For All



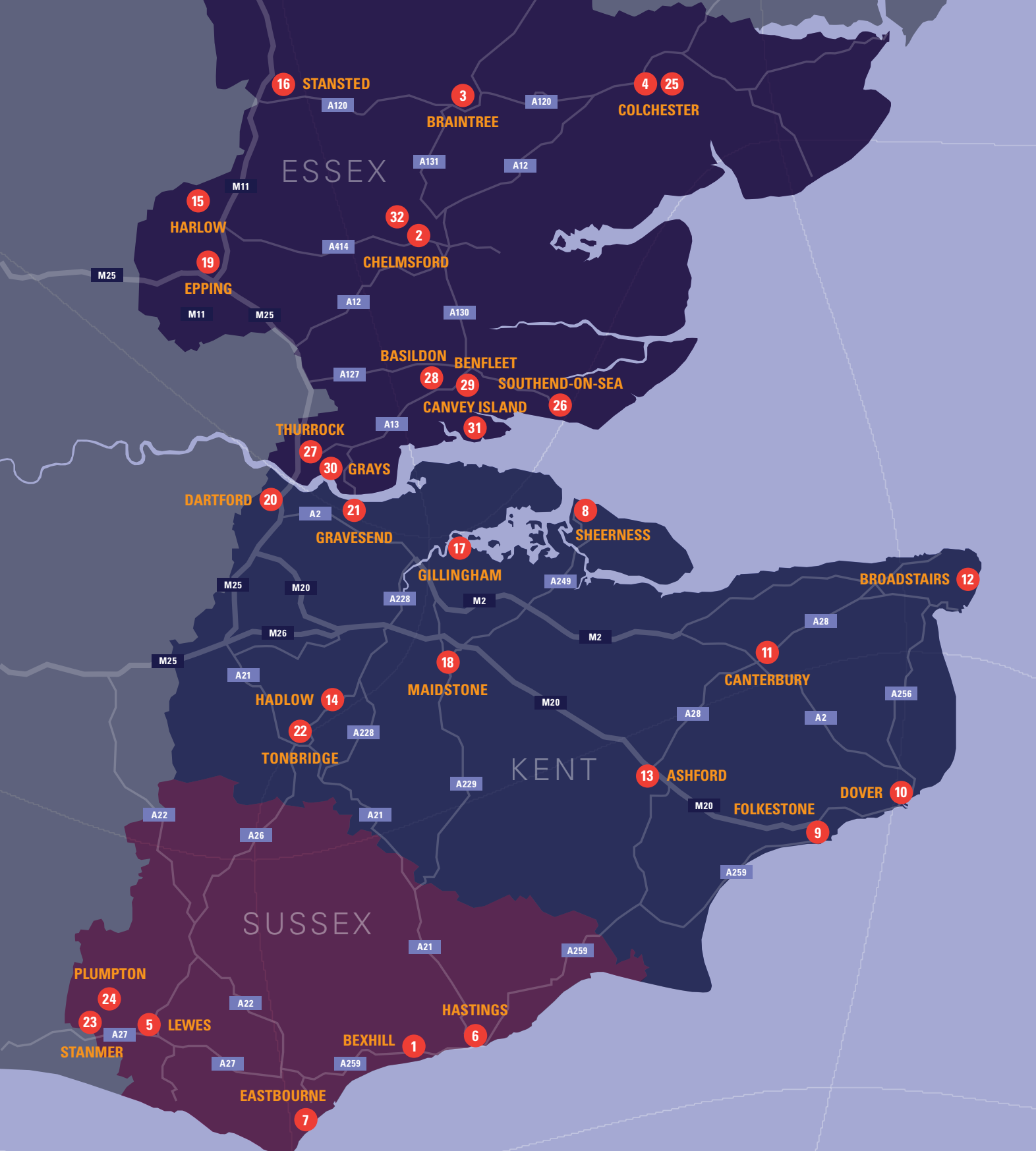
A collaborative partnership of further education colleges
across the south east local enterprise partnership area

Published by the South East FE Partnership - 2022

www.fesussex.org.uk
www.kentfurthereducation.org
www.federationofessexcolleges.org

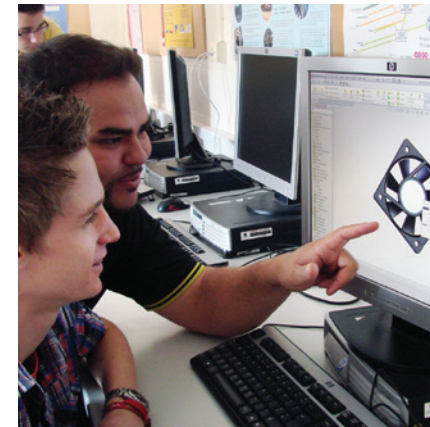
 Printed on recycled paper.





Our Colleges

- | | | |
|-------------------------------------|--|--|
| 1 BEXHILL COLLEGE | 11 EKC GROUP - CANTERBURY | 22 NORTH KENT COLLEGE - TONBRIDGE |
| 2 CHELMSFORD COLLEGE | 12 EKC GROUP - BROADSTAIRS | 23 PLUMPTON COLLEGE - STANMER |
| 3 COLCHESTER INSTITUTE - BRAINTREE | 13 EKC GROUP - ASHFORD | 24 PLUMPTON COLLEGE - PLUMPTON |
| 4 COLCHESTER INSTITUTE - COLCHESTER | 14 HADLOW COLLEGE | 25 SIXTH FORM COLLEGE COLCHESTER |
| 5 EAST SUSSEX COLLEGE - LEVES | 15 HARLOW COLLEGE - HARLOW | 26 SOUTH ESSEX COLLEGE - SOUTHEND-ON-SEA |
| 6 EAST SUSSEX COLLEGE - HASTINGS | 16 HARLOW COLLEGE - STANSTED AIRPORT COLLEGE | 27 SOUTH ESSEX COLLEGE - THURROCK |
| 7 EAST SUSSEX COLLEGE - EASTBOURNE | 17 MIDKENT COLLEGE - GILLINGHAM | 28 SOUTH ESSEX COLLEGE - BASILDON |
| 8 EKC GROUP - SHEPPEY | 18 MIDKENT COLLEGE - MAIDSTONE | 29 USP COLLEGE SEEVIC - BENFLEET |
| 9 EKC GROUP - FOLKESTONE | 19 NEW CITY COLLEGE - EPPING FOREST | 30 USP COLLEGE PALMERS - GRAYS |
| 10 EKC GROUP - DOVER | 20 NORTH KENT COLLEGE - DARTFORD | 31 USP COLLEGE XTEND - CANVEY ISLAND |
| | 21 NORTH KENT COLLEGE - GRAVESEND | 32 WRITTLE UNIVERSITY COLLEGE - CHELMSFORD |



Foreword

The principals and chief executive officers of the South East Further Education (SEFE) colleges are pleased to present the first of a series of publications highlighting the scope, role and impact of our further education colleges.

With over 82,000 learners and more than 6,600 staff, the FE colleges are truly embedded within and play a crucial part in the everyday aspirations and prosperity of our communities and businesses.

Furthering Skills and the Economy for All - sets out the mission, vision, core aims and membership of the SEFE partnership.

It also highlights the impact the FE colleges have across all ages and types of learners, from the 40,000+ 16-19s mainly on full-time programmes of study, to the 10,500 apprentices, tens of thousands of adult learners and the 6,000 plus higher education students, that account for £395m of education and skills funding annually.

This publication sets out the stall and potential of our individual FE colleges and a partnership, that will actively collaborate in the development and delivery of education and technical skills, that benefit and deliver social and economic transformation across the south east.

Contents

Background	2
Purpose and the role of the partnership	3
Mission	3
Vision	3
Key Facts	5
SEFE Colleges	6

Background

Since incorporation in the early 1990s the FE college organisations have played a vital role in engaging their communities and employers through the delivery of education and skills provision.

This has been predominantly for learners aged 16-19, adults and professional learners seeking to improve their skills and qualifications in addition to apprentices and their employers seeking work-based learning solutions.

Despite considerable changes to the FE sector and educational landscape since then, FE colleges continue to be highly responsive, innovative, adaptable and central to the social and economic prosperity of the areas they serve.

FE colleges across the regional counties of Essex, Kent and East Sussex, have reached a highly evolved scale, stability and commitment to collective action.

The situation for the sector remains fluid and constantly challenging over and above Covid-19 impact assessment and recovery strategies.

FE has been shown to be exceptionally resilient, responsive and committed to ensuring high quality provision to its learners and stakeholders during the pandemic. Few sectors have shown comparable impact on core outcomes and value for money during this period.

The publication of the White Paper - ***Skills for Jobs: Lifelong Learning for Opportunity and Growth***, demonstrates how FE is rightly seen by the Government as central to both economic and social prosperity.

Since publication of the white paper, expected change has accelerated with significant shifts in responsibilities for the regional skills dynamic. Our region will see Local Skills Improvement Plans implemented via local chambers of commerce that will engage and be informed by employers to accelerate the development of a relevant and modern skills base.

Strategic Development Fund initiatives led by FE colleges, will also work with employers and other stakeholders, with focus on development of the green economy and skills capacity to service carbon reducing measures across industry sectors.

FE colleges will also collaborate more extensively with local authorities, as well as the current SE local enterprise partnership, across a range of targeted projects and measures that develop local skills, and improve the educational outcomes and prospects of our communities and consequently the sustainability of businesses across the region.

The SEFE partnership will ensure the central role of FE by consistently informing and helping deliver these and other education and skills changes in the coming years.

Purpose and role of the partnership

The partnership has been established to ensure a higher profile for FE colleges as anchor institutions, whilst facilitating an effective vehicle for advocacy, influence and contribution of FE colleges across the region and more widely.

Its establishment principally aims to enable partner organisations to maximise their significant collective capacity in a manner that: informs, supports and enhances education and skills strategy, developments and delivery, sector knowledge, employer

engagement, stakeholder interfaces, effective investment and value for money.

Our Regional Core Aims below set out how we will work towards take this forward.

Mission

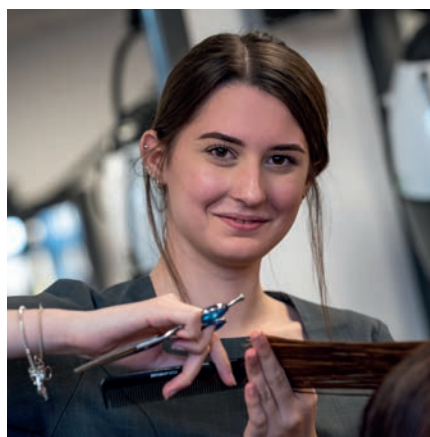
To play a leading role in the development and delivery of education and skills solutions, which benefit long-term social and economic transformation across the South East region.

Vision

Support the ambitions and aims for a global gateway to the UK, through creating a prosperous, thriving and innovative region, building upon the passion that we all have for skills – through the facilitation of strategic partnership working, enabling our duty as anchor institutions and systems leaders within our communities, to effect positive change and support the skills development of our residents and businesses at a regional level.

Our Regional Core Aims

- Influence and inform the coherent development and implementation of national, regional and local skills strategies and initiatives across the region and within its counties.
- Play a leading role in the Skills Advisory Panel in setting the skills strategy for the region,
- Enable appropriate use of capital and revenue investment in skills across the region to provide inspirational places for both businesses and students,
- Help our region recover, renew and regenerate from the Covid19 Pandemic,
- Underpin and provide the skills base required to improve productivity and efficiency,
- Increase skills and employment, working ever closer with our local businesses through the work we do with young people, adults, apprentices and higher education students,
- Enhance our digital and physical connectivity as a region through innovation and connecting young people and communities to inspire our businesses,
- Ensure that our institutions and students are at the forefront of the environmental agenda working for clean growth, reduction of carbon emissions and addressing climate change in the region,
- Provide the skilled workforce needed for inward investment and key infrastructure and housing developments across the region,
- Work in partnership to pool the collective strength of FE colleges where it has the greatest impact,
- Identify common core priorities and impact statements relating improvements and activity linked to industry sectors, the health and wellbeing of our communities and employers and the economy,
- Raise awareness across the region, of the important role FE colleges play in their communities and economy.



TOTAL NUMBER OF LEARNERS

82,000



TOTAL NUMBER OF APPRENTICES

10,500+



TOTAL NUMBER ON HIGHER EDUCATION
APPROX

6,000



TOTAL COMBINED INCOME APPROX

£394.6m



16-19
LEARNERS
40,000+

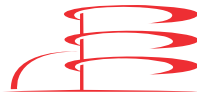


LEVEL 3
PROGRESSIONS
APPROX
21,500





TOTAL
NUMBER
OF STAFF
EMPLOYED
6,600+

SEFE Colleges



Bexhill 6th Form College

 Penland Road, Bexhill-on-Sea
East Sussex, TN40 2JG
 enquiries@bexhillcollege.ac.uk
www.bexhillcollege.ac.uk

BEXHILL COLLEGE

Bexhill College is a sixth form college with an accomplished track record of high achievement, its students progressing to further and higher education or apprenticeships. The total number of students exceeds 2,000 and the college has a turnover of almost £11 million per year. Wherever possible the college works closely with local employers and assists students into local employment through initiatives such as work placement, career days and employer visits. The college offers a hybrid curriculum of vocational and academic studies and in recent years has expanded the former to include more STEM based subjects including engineering and manufacturing.



 **MOULSHAM STREET CAMPUS**
Moulsham Street, Chelmsford,
CM2 0JQ

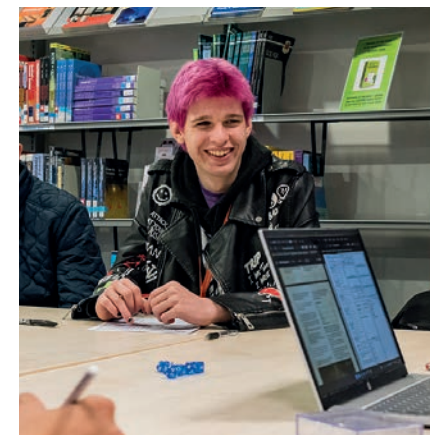
PRINCES ROAD CAMPUS
Princes Road, Chelmsford,
CM2 9DE

 careersadvicezone@chelmsford.ac.uk
www.chelmsford.ac.uk

CHELMSFORD COLLEGE

Chelmsford College is a small to medium sized general further education college that attracts students from across mid-Essex. It has 2 campuses based in the City of Chelmsford and its mission is "Chelmsford College: unlocking potential." The College offers a wide range of vocational / professional courses and apprenticeships to learners of all ages and there are approximately 4,000 individuals in Learning with the college, at any one time. It is a great place to study, with excellent facilities and a vibrant community of staff and students where student experience is at the centre of what it does.

The College works hard to prepare its learners for the world of work, and engages with the business community to meet the skills needs of employers across Essex. The College actively works with over 200 different employers across a wide range of industry sectors, from construction to hospitality. Its learners develop both the knowledge and skills needed to achieve their goals and successfully progress onto their next step, be that employment, further study or higher education.



 **COLCHESTER CAMPUS**
Sheepen Road, Colchester,
CO3 3LL

 info@colchester.ac.uk
www.colchester.ac.uk

COLCHESTER INSTITUTE

Colchester Institute is a large general College of Further and Higher Education with two main campuses in Colchester and Braintree, and four further adult learning centres in Witham, Clacton, Dovercourt and Harwich. The latter specialises in Engineering training programmes, largely but not exclusively for the Energy Sector. The College offers a wide-ranging programme of professional and technical education and training to around 4,000 16-18 year olds on full time programmes, 1800 apprentices, 500 Higher Education students (under the banner 'University Centre Colchester') and around 2,000 adult learners each year.

The College's clear purpose is to develop students' academic, technical and professional skills, and the knowledge and behaviours to succeed in life, work and to support the local economy. Preparing students for work and assisting them to secure exciting career destinations is a top priority for Colchester Institute. In recent years over £30m has been invested in state of the art facilities for subjects that include Health and Care, Engineering, Construction and Digital Skills and this is supported by close partnership working with over one thousand employer organisations.





EASTBOURNE CAMPUS
Cross Levels Way, Eastbourne,
East Sussex, BN21 2UF

HASTINGS STATION PLAZA CAMPUS
Station Approach, Hastings,
East Sussex, TN34 1BA

LEWES CAMPUS
1 Mountfield Road, Lewes,
East Sussex, BN7 2XH

ORE VALLEY
Parker Road, Hastings,
East Sussex, TN34 3TT

NEWHAVEN
Training Centre, Denton Island,
Newhaven, BN9 9BN

 enquiries@escg.ac.uk
www.escg.ac.uk

EAST SUSSEX COLLEGE GROUP

East Sussex College (ESCG) is a large college group with an annual turnover of £50m and campuses in Lewes, Newhaven, Eastbourne and Hastings. Over 800 staff are employed by the college which enables ESCG to offer a wide range of courses for over 10,000 students annually. The curriculum extends from entry level up to degree. The college works with over 700 employers across the southeast offering over 1000 apprenticeship starts each year. Senior staff sit on a range of key economic and skills boards including Coast to Capital LEP and Skills East Sussex, the employment and skills board for the county.

The college is highly active in the international market attracting students from across the world to study both vocational and academic courses.



ASHFORD COLLEGE
Elwick Road, Ashford,
Kent, TN23 1NN

BROADSTAIRS COLLEGE
Ramsgate Road, Broadstairs,
Kent, CT10 1PN

CANTERBURY COLLEGE
New Dover Road, Canterbury,
Kent, CT1 3AJ

DOVER TECHNICAL COLLEGE
Maison Dieu Road, Dover,
Kent, CT16 1DH

FOLKESTONE COLLEGE
Shorncliffe Road, Folkestone,
Kent, CT20 2TZ

SHEPPEY COLLEGE
Bridge Rd, Sheerness,
Kent, ME12 1HL

 enquiries@ekcgroup.ac.uk
www.ekcgroup.ac.uk

EKC GROUP

EKC Group is a family of six Colleges, with four additional Business Units serving the whole of East Kent. We also run a ground-breaking training hotel, The Yarrow hotel, and work alongside a growing Multi Academy Trust, EKC Schools Trust, operating schools in East Kent. With more than 12,000 students, the Group has Colleges in Ashford, Broadstairs, Canterbury, Dover, Folkestone and Sheppey. Our annual turnover is £60m and, with over 1,500 staff, we are an anchor organisation within East Kent. Each of our Colleges' has a Local Board made up of key stakeholders from the community, which ensure they deliver for their localities.

A Group that believes in serving all its communities, we are the largest provider of high needs education in England. The Group works across areas of high socio-economic deprivation, serving some of the most deprived wards in the UK. Within many of these areas, unemployment is higher than the national average whilst skills attainment is lower. We have a long history of working collaboratively with employers, community groups, networks and local authorities, and will continue to play a leading role in ensuring every community we serve has access to high quality technical and vocational education.



HARLOW COLLEGE
Velizy Avenue, Harlow,
Essex, CM20 3EZ

STANSTED AIRPORT COLLEGE
Round Coppice Road
London Stansted Airport
Stansted, CM24 1AR

 reception@harlow-college.ac.uk
www.harlow-college.ac.uk

HARLOW COLLEGE

Harlow College is recognised by Ofsted and others for providing good quality education and training in the West of Essex. We are placed at the heart of the U.K. Innovation Corridor between London and Cambridge, and pride ourselves on the work we do to provide our students with great careers.

We have a major partnership with London Stansted Airport and in 2018 established Stansted Airport College, the first Aviation College of its kind at any major airport in the UK.



In addition, our focus on careers led to the development of the Harlow Advanced Manufacturing Centre bringing together state of the art equipment and employer partners, to create a skilled pipeline of engineers for the future.

We were the first College in the UK to achieve Apple Distinguished Status, an international kitemark for innovation in learning and teaching technologies, and we are a DfE funded Edtech Demonstrator. We are one of only twenty-one Maths Centres for Excellence in the country.

We believe firmly in equality, diversity and inclusion and have a commitment to transforming the lives of young people and adults in our community. We want all our learners to achieve their ambitions, contribute significantly to the productivity of the economy and have happy and purposeful lives.



MEDWAY CAMPUS
Medway Road, Gillingham,
Kent, ME7 1FN

MAIDSTONE CAMPUS
Tonbridge Road, Maidstone
Kent, ME16 8AQ

courseng@midkent.ac.uk
www.midkent.ac.uk

MIDKENT COLLEGE

MidKent College, in various forms, has existed for over 100 years and supports its students annually to acquire the skills and attributes that they need to take their next steps, be that in further study or employment. Our mission and purpose is to provide high-quality technical education and training, to drive the ambitions and prosperity of the communities of Medway, Maidstone and the surrounding areas, working in partnership to ensure our students have the skills and qualifications for the changing world of work.

Along with our own specialist training company, MKC Training Services, that provide specialist training in Construction and Engineering, our two campus locations in Maidstone and Medway exist to serve these communities and support local economic prosperity. With an Ofsted rating of Good and Outstanding financial health our future is focussed on helping our community, providing excellent education, contributing to a prosperous economy, transforming our digital capabilities, improving our environment and ensuring we reflect the diversity of our place by being inclusive.



EPPING FOREST CAMPUS
Borders Lane, Loughton
IG10 3SA

info@ncclondon.ac.uk
www.ncclondon.ac.uk

NEW CITY COLLEGE – EPPING FOREST

New City College's campuses are located in Tower Hamlets, Hackney, Redbridge, Epping Forest and Havering. New City College is the 4th largest further education provider in the UK, with a total income of £100 million. In 2019/20 the College supported nearly 26,000 students, comprising of approximately: 9,300 16-19s, 16,000 adults and 750 apprentices. The group's catchment areas include areas of deprivation, as well as some affluent areas. The majority of the student body live in deprived wards; approximately a third of the group's adult cohort are dependent on benefits or income support, and a similar percentage of 16-19s are entitled to free meals.

New City College has a significant impact on the lives of the students it educates and the communities it serves. At our Epping Forest campus, we focus on providing our students with the right mix of theory and practical learning to enhance their employability skills and career ambitions. We are proud of our modern campus which offers students one of the very best learning environments, with modern classrooms, resources and technology and all focused on helping students progress into their chosen career path or onto further study at university.



DARTFORD CAMPUS
Oakfield Lane, Dartford,
Kent, DA1 2JT

GRAVESEND CAMPUS
Lower Higham Road, Gravesend,
Kent, DA12 2JJ

TONBRIDGE CAMPUS
Brook Street, Tonbridge,
Kent, TN9 2PW

HADLOW COLLEGE
Hadlow, Tonbridge,
Kent, TN11 0AL

 course.enquiries@northkent.ac.uk
www.northkent.ac.uk

NORTH KENT COLLEGE

North Kent College serves the communities of South-East London, Dartford, Gravesend, Sevenoaks and Tonbridge. The College has four main campuses which are in Dartford; Gravesend; Hadlow (which has a predominantly land based curriculum); and Tonbridge offering a diverse range of education and training. In addition, the College has bespoke sites in: Greenwich delivering Equine training; Gravesend Waterfront offering education to students from across the UK on National Maritime studies; and Bluewater Shopping Centre, where the Learning Shop, in partnership with Bluewater and Job Centre Plus, provides a range of assistance around employability to the local community.

The College offers a wide range of vocational and professional qualifications, from Entry Level courses to under-graduate programmes across a plethora of subjects. The College works in partnership with the University of Greenwich; the University of Kent; and Canterbury Christ Church University.

Over the years, College has grown and its offer significantly expanded, yet its commitment to the quality of its teaching remains steadfast. By continuing to provide a first-class education experience to its students, North Kent College will ensure that they are ready to meet the local, national and global opportunities available to them.



PLUMPTON COLLEGE
Ditchling Road, Plumpton,
East Sussex, BN7 3AE

STANMER CAMPUS
One Garden Brighton,
Stanmer Park, Lewes Road
Brighton, East Sussex,
BN1 9SE

 enquiries@plumpton.ac.uk
www.plumpton.ac.uk

PLUMPTON COLLEGE

Centrally located in Sussex, Plumpton college is the south east regional specialist in environmental and land based education and training, including environmental impacts. Provision for 3500 learners spans entry level through to Level 6 HE and represents the wide range of land based subjects including agriculture, viticulture and oenology, land management and rural business development.

Plumpton College works closely with the Agriculture and Horticulture Development Board on the strategy and development of the national Competency Framework for the agriculture and horticulture industries.

The college has taken a leading part in establishing and driving the development of land based skills training and to this end works with a wide range of employers. The college is a highly proactive manager of apprenticeships and works with employers to provide work placements for full time students.

Viticulture courses have established Plumpton as a world leader in wine production technology and the college regularly wins prestigious awards for this and its curriculum which covers all levels up to and including Masters degrees.

THE SIXTH FORM COLLEGE COLCHESTER

The College is a specialist Sixth Form College - one of the largest and most successful providers of general academic sixth form education in the country. The College's prime aim is to provide broad, high quality academic and general education programmes to our 16-19-year-old full time students; this includes providing students with support, additionality, skills and personal development within their sixth form experience as well as studying pre-university academic courses. The College maintains an excellent reputation both locally and nationally.

The ethos and atmosphere in the College is very positive and vibrant with a strong sense of community. A broadly-based educational experience is provided for full time 16-19-year-old students, and strong importance is placed on the personal development of each individual. As a young adult environment, the College provides a bridge between the worlds of school and of higher education or employment. The aim is to give students the skills, experiences, opportunities, qualifications and guidance needed to progress and successfully make the transition to the adult world.



SOUTH ESSEX COLLEGE

South Essex College is the largest college in Essex and runs along the Thames Estuary from Southend-on-Sea to Thurrock. We offer a wide range of courses for all abilities and ages including 16-19 study programmes, higher education, apprenticeships and adult. We deliver programmes from entry level through to full Honours degree. The college has six campuses with individual specialisms including health and care plus the creative industries at Southend town centre, logistics and service industries at Thurrock town centre, digital technologies at Basildon town centre, engineering and building services at Luckyn Lane also in Basildon, building trades and motor vehicle engineering at the Progress Road site in Southend and theatre production, make-up and costume design at High House Production Park in Purfleet.

South Essex College prides itself on being able to offer provision at all levels for all age groups, providing opportunities for local people to access quality education and training. The college has invested heavily in developing programmes which meet the needs of the local economy. We work side by side with a wide range of employers partners alongside our District and Unitary Authorities to ensure skills shortages are addressed, with a key focus on Technical Skills. We have an excellent reputation and expertise in supporting learners with Learning Difficulties and Disabilities studying on mainstream programmes and support our creative sector through our joint delivery of the National College of Creative Industries. We are awaiting the outcome of our recent bid to the DFE as lead partner of the South East Institute of Technology involving 6 college partners, 3 Universities and 9 Core Employer partners across the SELEP region. The IoT will support the delivery of higher Level technical qualifications in Engineering/ Manufacturing, Construction, Transport/ Logistics, Health Science, Horticulture (including viticulture) and Information and Communications Technology.





 **SEEVIC CAMPUS**
Runnymede Chase, Benfleet,
Essex, SS7 1TW

PALMER'S CAMPUS
Chadwell Road, Grays,
Essex, RM17 5TD

XTEND DIGITAL CAMPUS
Meppel Avenue, Canvey Island
Essex, SS8 9RZ

 **info@uspcollege.ac.uk**
www.uspcollege.ac.uk

USP COLLEGE

USP College is a medium-sized general further education college that attracts students predominantly from across the Thames Corridor. It has three campuses (Palmer's, Seevic and XTEND Digital) in Grays, Benfleet and Canvey Island. The College specialises in 5 sector areas, focusing on career routes underpinned by a wide range of academic, professional courses and apprenticeships. The college has invested over £1.5m in its new state-of-the-art XTEND Digital campus on Canvey, becoming the first academic institution in the UK with an on-campus volumetric capture studio and Teslasuits for creating and experiencing content in virtual and augmented reality.

The College currently has over 4,000, learners excluding its expanding HE provision which accounts for approximately 500 learners. USP College has teamed up with the Career Colleges Trust to deliver courses that have been specifically designed with employers, ensuring that students are equipped with the skills and experience needed to succeed.



 Writtle, Chelmsford,
Essex, CM1 3RR

 **info@writtle.ac.uk**
www.writtle.ac.uk

WRITTLE UNIVERSITY COLLEGE

With a long standing reputation since 1893, Writtle University College is located in the village of Writtle, in rural Essex, close to the city of Chelmsford surrounded by great transport links. The University College, offers a range of further education, apprenticeships, undergraduate, postgraduate, short courses and certificates of competence.

The further education curriculum at Writtle University College offers students a specific and unique learning experience through level 2 and level 3 programmes serving Land, Animal and Sport based subjects. At Writtle all students have the opportunity to devise their own path into industry with the opportunity to study from Level 2 through to Level 7 through further education programmes and progressing into higher education courses. Equipping themselves with the knowledge, skills and behaviours, students can take advantage of excellent teaching and learning facilities, supportive inclusion and wellbeing teams. Students will utilise the industry standard estate, including a dedicated equine campus, working farm and animal centre and will make good use of industry standard resources.

The subjects offered align with the South East Enterprise Partnership (SELEP) strategy which focuses on the importance of the economy expanding with strong growth in jobs and businesses linked to the South East's agricultural production line into the London market and the need for education, health, food production and the environment.